

ADVERTISING WORKSHEET

COMPANY NAME: BENESCH, ISAAC & SONS -
 STREET: _____
 CITY-STATE: ANNAPOLIS, Md. - BALTIMORE, Md - POTTSVILLE, PA - WIKES-BARRE, PA
 BUSINESS TYPE: MAILORDER? - FURNITURE
 WORDING AS SHOWN: THE GREAT HOUSE OF ISAAC BENESCH & SONS
POTTSVILLE, PA WIKES-BARRE, PA BALTIMORE, Md ANNAPOLIS, Md
 SHAPES KNOWN: BOWL
 MAKER: FENTON
 BACK PATTERN: WIDE PANEL
 COMMENTS: FAIRLY COMMON - ONE KNOWN EXAMPLE WITH "BENESCH" MISPELLED.
SHOWN AS "BENECH"

BOWL 200-300
~~150-200~~
~~600-800~~
MISPELLED BOWL ~~500-600~~

MARYLAND HISTORICAL SOC.
 301-685-3750

SEND LETTERS
 PRINT & PHOTO'S
 REF. DEPT.
 201 W. MONUMENT ST.
 BACTI, MD 21201

GOMPERT PARTNER

LETTERS SENT 5/12

5/12/89

BALTIMORE LIBRARY - FURNITURE?
 1-301-396-4042

ANNAPOLIS LIBRARY

1-301-280-1750

POTTSVILLE
 1-717-622-8880

WIKES-BARRE

1-717-823-0156

SON OF ISAAC
 BAY ST. →



Mr. John D. Resnik
10031 Banner Lava Cap
Nevada City, California 95959

11 July 1989

Dear Mr. Resnik,

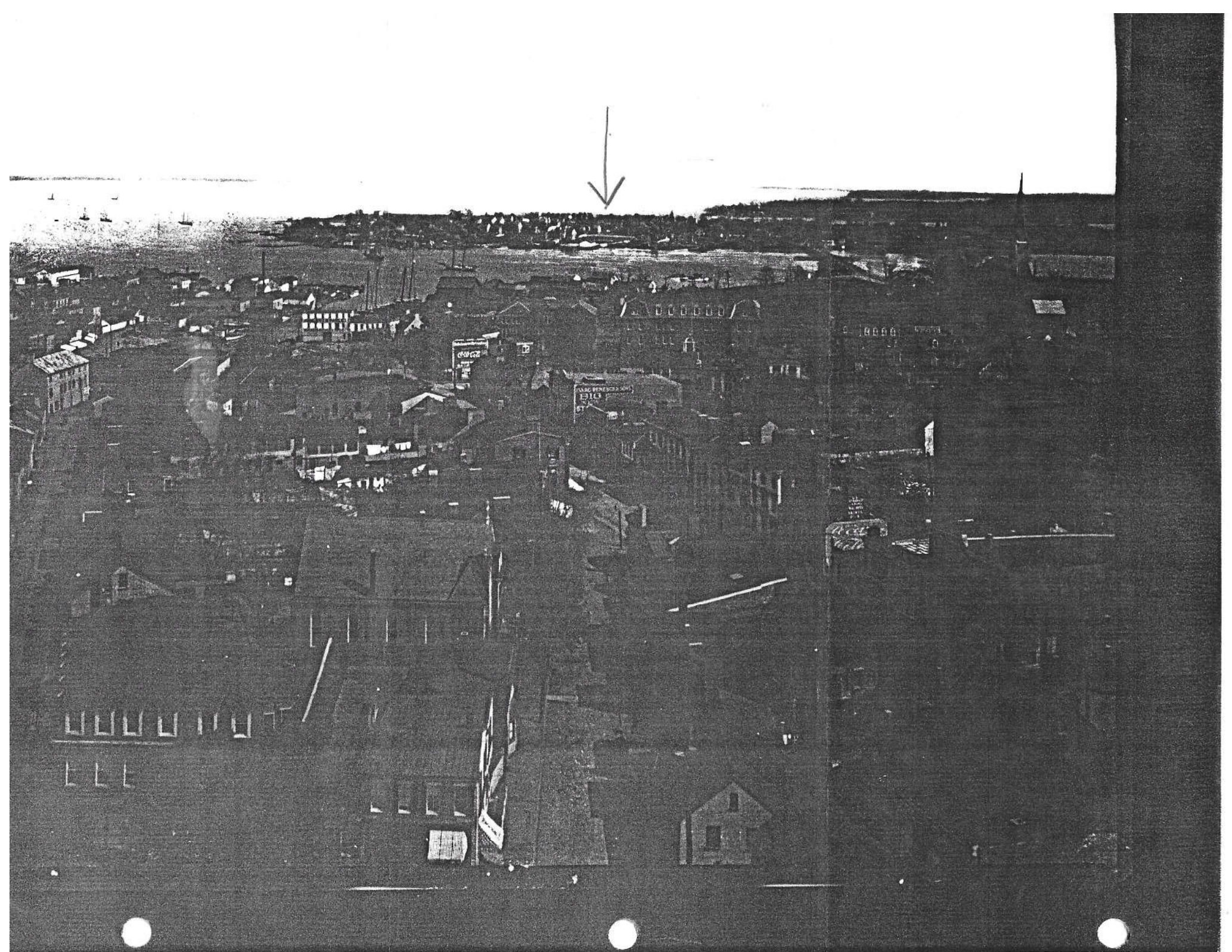
Some time ago you wrote requesting information concerning the Isaac Benesch and Sons various business enterprises. At the time, I was unable to find anything relevant. As luck would have it, I recently ran across a photograph in an uncatalogued collection that shows a building in Annapolis bearing the sign "Isaac Benesch and Sons/Big New St[ore]". I am enclosing two photocopies, one an enlargement of the other.

I apologize for the poor quality of the copies. Copy photographs may be ordered through Jeff Goldman in the Photo Services Department. I have also enclosed a price list for your consideration.

If you have any more questions, please contact me.

Sincerely,

Laura S. Cox
Prints and Photographs Librarian





17 May 1989

Mr. John D. Resnik
10031 Banner Lava Cap
Nevada City, California 95959

Dear Mr. Resnik:

I am afraid that we are able to provide very little information in reply to your inquiry about Isaac Benesch & Sons.

We enclose photo-copies of entries from Baltimore City directories between 1900 and 1927, and of two clippings from our obituary file. We hope that these may be of some help. We can find no references to other branches.

Yours sincerely

Isabella Athey
Library assistant



Mr. John D. Resnik
10031 Banner Lava Cap
Nevada City, CA 95959

17 May 1989

Dear Mr. Resnik,

I have made a search of the collections of the Prints and Photographs Division for images of Isaac Benesch & Sons. I did not find anything pertaining to the family or their business.

If you have not already done so, I recommend contacting the Maryland State Archives, PO Box 828, Annapolis, MD 21404; or call (301) 269-3915. The Peale Museum may also be of help. You may contact them at 225 Holliday Street, Baltimore, 21202; or call (301) 396-1149.

If you have any more questions, please contact me.

Sincerely,

Laura S. Cox
Prints and Photographs Librarian

470

THE
JEWS OF BALTIMORE,

An Historical Summary of Their Progress and Status
as Citizens of Baltimore from Early Days to the
Year Nineteen Hundred and Ten

BY
ISIDOR BLUM //

WITH SPECIAL CONTRIBUTIONS BY

REV. DR. WILLIAM ROSENAU
REV. DR. S. SCHAFFER
REV. DR. CHARLES A. RUBINSTEIN
REV. DR. ADOLF GUTTMACHER
REV. DR. HENRY W. SCHNEEBERGER
HON. LEWIS PUTZEL

Illustrated

HISTORICAL REVIEW PUBLISHING COMPANY
BALTIMORE — WASHINGTON

1910

EPFL

MDXF 190.9.J4

7
arpets,
Miller. The
The business
ies two large
with 200,000
are importers
s, Underwear,
ar, Shirts and
ork and east of
0 and its ter-

GOMPRECHT & BENESCH

There are few larger and more complete emporiums of house-furnishing lines in the country than the well-known and highly esteemed firm of Gomprecht & Benesch, 316, 318, 320 and 322 North Eutaw Street. This house was established in 1883 as the Eutaw Furniture Co. In September, 1897, the business came under the control of J. Gomprecht, and in 1901 the firm became as at present. The structure was rebuilt that same year, and is a handsome six-story building of brick and terra-cotta, with dimensions of 60 x 140 feet. Here is displayed one of the largest and most complete lines of furniture and pianos carried by any house in the United States. A most attractive exhibit is made of furniture of all styles and makes, for parlor, bedroom, library, boudoir and kitchen uses. A large and varied assortment of carpets, rugs, mattings, oilcloths and linoleums are always in stock. The house is popularly called the "home-making establishment"; and, in fact, a tasty and comfortable home can be equipped from cellar to garret without having to go out of the store. The house sells for cash, or on a most convenient and easy system of payments graduated to suit persons of moderate incomes. The equipment of the house is perfect, and the salesmen are experienced and courteous, with every facility for the prompt delivery of goods of the most satisfactory character. The firm consists of J. Gomprecht and J. Benesch, both of Baltimore.

S. GINSBERG & CO.

WHOLESALE CLOTHING MANUFACTURERS

GERMAN AND PACA STREETS, BALTIMORE, MD.

S. Ginsberg & Co. was established in 1893 by Solomon Ginsberg, who is the sole owner of the business. The original location of the firm was at 29 Hopkins Place, and its present home is the magnificent structure at the northwest corner of Green and German Streets, where is conducted one of the largest wholesale clothing manufacturing establishments in Baltimore. S. Ginsberg & Co. do an extensive business throughout the south and southwestern sections of the country, which territory is traveled by eight salesmen. The number of operatives employed by this house ranges from 350 to 400.



DO NOT CIRCULATE

★ ★ HIGHLIGHTS OF G & B HISTORY ★ ★

1901—The Grand Opening of "The Store of Largest Assortments"—Mr. Jacob Gomprecht and Mr. Jesse Benesch, the members of the firm! 1902—We install the largest rug-display racks in the South! 1903—We introduce "Mission Furniture" to Baltimore! 1912—We are the first retail store in Baltimore to buy an automobile truck! 1916—We build a five-story annex! 1921—We build a Model House on our third floor—it is the first in Baltimore! 1922—We are selected to be the Baltimore agents for the world-famous Ostermoor Mattress! 1925—We buy a new warehouse with 60,000 sq. ft. of storage space! 1926—We introduce the Trade-In idea to Baltimore! 1927—We are one of the first stores in America to show Modern furniture! 1927—We join the "United Furniture Stores", a group of 40 stores with tremendous buying-power! 1933—Mr. Jesse Benesch made president of the National Retail Furniture Association! 1934—We are awarded the prize for doing the best furniture-store advertising in the United States! 1935—We build our Model Rooms! 1936—We build "Maple Court", an entire floor of Maple furniture! 1936—Mr. Jesse Benesch to be awarded the Cavalier Trophy for having done more for the furniture industry than any man in this country! 1936—Gomprecht & Benesch: six large floors, a five-story annex, approximately 100,000 sq. ft., filled with everything for your home!

BALTIMORE

*The Gateway to the South,
The Liverpool of America.*



ITS GLORIOUS PAST: ITS BRILLIANT
FUTURE AS A SEAT OF LEARNING,
A HOME OF MANUFACTURERS, ...
AND A CENTER OF COMMERCE.

COMPILED BY
THE MERCANTILE ADVANCEMENT CO.
BALTIMORE, MD.
1898.

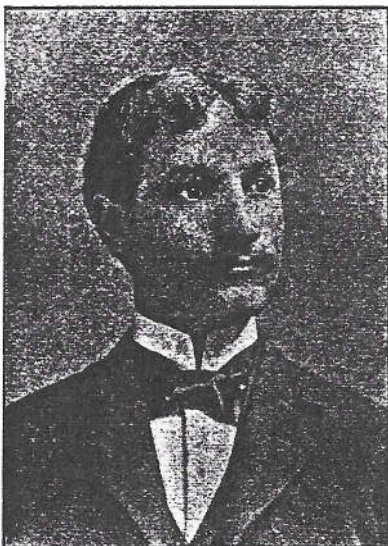
MD.
XHC 108
.B33
M4

BALTIMORE, 1898.

RIDDLEMOSER.

This review is not so much a venue under notice, as to sort of business enterprise. G. W. and R. L. Riddlemoser and Embalmers, located in a representative consphere, in that select and high fare. They have been in business for four or more years, and are graduates of the Baltimore School of Embalming, and are both the arterial and other qualifications, but to have been prominent of the enterprise which these gentlemen have drawn their ties, connections and have enumerated. They are as of social prominence. For example, occupies the secretary of the Occidental Club, each of these gentlemen H., Zeta Conclave. The owned, utilized and equipped their craft, is an imposing business has out- necessary to the business, of course. A diverting, this concern's business, is addings, parties, balls, etc., of the occasion. Evidently the citizens and the have made no mistake in

porters of choice wines and liquors. Personally speaking, Mr. Gittings is a Baltimorean, "to the manor born," is a member of a family long distinguished in the commercial and financial affairs of this city. He was formerly of the firm of Gittings & Co., well-known bankers of this city, and is an active and prominent member of the Maryland, Athenæum, Country, Elkridge Fox Hunting and other clubs of high degree. The splendid goods he handles cannot fail to place his business establishment in the very front rank of its department of business.



JAC. GOMPRECHT.

EUTAW FURNITURE COMPANY.

There are few business houses here that have not taken part in the growth of the city, and one to which we wish specially to refer is that of the Eutaw Furniture Company, Nos. 316-318 North Eutaw street. This business was established fifteen years ago as a branch store of Isaac Benesch of Gay street, and was conducted as such until September 1, 1897, when Jac. Gomprecht succeeded to the business and applied the present style of title. The premises occupied are a five-story brick building, and it is stocked with one of the largest and most complete lines of furniture, carpets, rugs, house furnishing goods, etc., ever shown in this city. The house is generally known as a modern home furnishing es-

tablishment and supplies complete household outfits in its line. The stock is new and the immense store gives patrons a chance to make selections that will please. Gomprecht is a native of this city, and is a business man of experience and rare ability. He has been connected with the house a number of years and is highly esteemed.

H. C. BOWMAN.

Prominent among those who are bearing a municipal banner far to the forefront in their respective departments of enterprise, we may refer to the late and distinguished master of sanitary science, Mr. H. C. Bowman, 328 North Howard street, who for many years has been contributing to the health and comfort of this and many other communities by his exercise and knowledge of his special branch of business enterprise, that of sanitary plumbing. Having been established in the year 1871, Bowman has, for a period of much more than twenty-five years, been dispensing his superior services for the benefit of the public. His place is a three-story brick building, all of which is most thoroughly and adequately equipped with twenty to thirty skilled and expert mechanics employed. The latest sanitary appliances are very much in evidence in the way of plumbing, the setting up and installation and of hot-air pumping engines, water wheels, hydrants, stoves, ranges and other heating apparatus and free estimates upon all such work. In the course of his career, we note the especial prominence of his superior line of porcelain-lined bath-tubs and fixtures of every kind and description. Mr. Bowman is in full harmony and communion with the useful and honorable central organization of the trade, the Master Plumbers' Association, of which excellent body he is an honored ex-president. His buildings as follows: Dr. I. E. Emerson's residence, on Eutaw Place; Dr. Howard A. Sanitarium, Eutaw Place; Arundel B. Charles street and Mt. Royal avenue; Bauernschmidt, North avenue and Broadway; Eutaw Ready School, Harford and North; Avalon Hotel, Green Spring Valley; cottages and remodeling of the Chattahoochee Green Spring Valley; private residence of Dr. Stewart, Green Spring Valley; private residence of Charles J. Bonaparte, Esq., county; private residence of Dr. H. A. Keair, Md.; St. Timothy's School, Green Spring Valley; Judge Fisher's private residence, and many

GEO.

the notable change exception. S be our province ge Rauh, a mercl e, serves the pur as an expert pur us of his class. M ONE has been a resp

and



GITTINGS.

Months there has been a business enterprises an establishment unusually and exceptionally in this business operation. The at of Mr. Ernest Gittings, wines and liquors, at No. 3 Fr. Gittings occupies most adapted business quarters. alty of supplying the lead- and gilt-edged trade in this hington and other impor- is agent here for the Wal- ny, of New York City, im-

ank & Son, A., Im
nk & Co., C. C., F
sselbaugh, Wm. H
368 North Gay
wlmse & Bro., H.,
301 Exchange
asers, C., . . Ana
Bantz & Bro., Agents
eif & Bro., L., . .
Judge Fisher's private residence, and many

operation throughout the Southern half of the Union. This excellent and progressive firm is marked for its liberal and modern methods of business, the superiority and general excellence of the goods handled and the prompt, accurate and honorable business methods which prevail in all their transactions. Messrs. Charles Reuter and J. D. Malloy are active members of the Merchants and Manufacturers' Association, and belong to that alert, enterprising and public-spirited class of citizens and business men.

EUTAW FURNITURE COMPANY.

There are few business houses here that have not taken part in the growth of the city, and one to which we wish specially to refer is that of the Eutaw Furniture Company, Nos. 316-318 North Eutaw street. This business was established fifteen years ago as a branch store of Isaac Benesch of Gay street and was conducted as such until September 1, 1897, when Jac. Gomprecht succeeded to the business and applied the present style of title. The premises occupied are a five-story brick building, and it is stocked with one of the largest and most complete lines of furniture, carpets, rugs, house furnishing goods, etc., ever shown in this city. The house is generally known as a modern home furnishing establishment and supplies complete house-keeping outfits in its line. The stock is new and complete, and the immense store gives patrons an excellent chance to make selections that will please.

Mr. Gomprecht is a native of this city, and is a young business man of experience and rare ability. He has been connected with the house a number of years and is highly esteemed.

BAKER BROTHERS & CO.

One of the oldest houses in this city we wish to mention in this review is that of Baker Brothers & Co., whose offices and salesrooms are located at Nos. 36 and 38 South Charles street. This business has the record of having been founded away back in the year 1790, but a short time subsequent to the close of the War of the Revolution. Its founder was the grandfather of the members of the present firm. Through all these years this business has grown with the city's growth, and kept pace all the while with such improvements in methods and appliances as the advance of the American manufactures brought into being from time to time. It is indeed a wonderful record, and one which tells a story of continually able and successful business management. As it stands today, this house is one of the

most important in Maryland and the entire South. The firm are extensive manufacturers of window glass and druggists' glassware, owning two exceptionally large plants, the one for the production of window glass being situated on Federal Hill, and that for the manufacture of druggists' glassware at Spring Gardens, the two combined, when in full operation, giving employment to half a thousand operators. The goods manufactured by this firm are of uniformly high grade and quality. The present individual components of the firm are Messrs. William Baker, Jr., and Charles E. Baker, both natives of Baltimore. They have in many ways contributed by their influence and active co-operation to extend, build up and enhance the business and commercial repute and influence of Baltimore.

THE MUTUAL FIRE INSURANCE COMPANY IN BALTIMORE COUNTY.

One of the best and most ably managed insurance companies of Maryland is the Mutual Fire Insurance Company, in Baltimore County, whose chief office is located at No. 304 East Lexington street, this city, upon the first floor of the Hoen Building. This company has been in active operation for well nigh half a century, having been incorporated in the year 1849. It is a purely mutual company, and therefore has no capital stock, as such, but its operations are thoroughly co-operative, and every policy holder is part of the company itself. The amount of its risks in force at a very recent date was \$4,758,862, and premium notes in hand \$351,752.30. The class of risks accepted are farm dwellings and outbuildings, country stores and their stocks, country churches and school buildings, and all properties located in the open country, or in small country towns, villages and hamlets, as well as in Baltimore City. The officers of the company are: George H. Merryman, President, Bosley Postoffice, Baltimore County; Milton Dance, Secretary and Treasurer, Gittings Postoffice, Baltimore County; Joseph A. Waesche, Clerk, Westminster, Carroll County. The directors are: James W. Ayres, Parkton; Ed. S. W. Choate, Randallstown; John E. Bull, Ecklo; George Prechtell, Upperco, and Reister Russell, Reisterstown, Baltimore County; F. H. Orndorff, Westminster, Carroll County; David P. Smelser, New Windsor, Carroll County; William L. Richards, Patapsco, Carroll County; J. S. Biggs, Rocky Ridge, Frederick County; Joseph M. Streett, Bel Air, Harford County; S. K. Dashiehl, Jessups, Howard County; John J. Reese, Westminster, Carroll County, and Upton Darby, Gaithersburg, Montgomery County. Messrs. George H. Merryman and Milton Dance, who have the imme-

diated control and direction of the business of the company, are gentlemen of experience, ability and the highest integrity, and any business interests committed to their keeping are in the safest and most capable hands.

CHESAPEAKE OIL COMPANY.

One of the most prominent oil companies of Baltimore is the Chesapeake Oil Company, incorporated under the West Virginia laws, and now established in Baltimore. Its officers and owners are both Baltimoreans by birth. These gentlemen are: Mr. John W. H. Geiger, President, and W. J. Dunkel, Esq., Secretary, Treasurer and Manager. The location is at the corner of Ostend and Stockholm streets, where the offices and works make an impressive feature of the metropolis. Six tanks, two-story refinery, a one-story warehouse, yards, etc., give the superficial idea as to the entirety. The output of the concern is and embraces in part, "Confectioners' Purity Oil Dressing," "Chesapeake Economy Compound for lithographers and printers." The Chesapeake Dryer Company (incorporated) is controlled by the Chesapeake Oil Company, the status, ramification of trade, etc., of which has been above noted. Its manufactured products embrace, among other items, Chesapeake tanners' oil, lightning dryer, union and turpentine japans, asphaltums, dipping varnish, lacquers, bright varnish, pine oil, etc. The disposition of these diversified products rests with and is superintended by the same management as that of the Chesapeake Company, as we have seen. The Baltimore Dry Paint Works is third allied, if not conjoined, interest centering in and in close touch with the two institutions just mentioned. W. J. Dunkel & Co. are the sole proprietors, whilst Mr. Dunkel in person is the efficient and well-known manager of this important industry. The output from this concern deserves also a brief, if summarized, mention: The Dry Paint Works, then, are miners and manufacturers of dry metallic paints and mortar colors, also of lightning dryer, roof oil, union and turpentine japans, asphaltums, Venetian red, Spanish brown, metallic brown, yellow ochre, foundry facings, soapstone, asbestos, slate, silex, talc, etc. Three cogs in one wheel, so to speak, are these three allied interests. John W. H. Geiger is, as we have said, a Baltimorean by nativity. He is a gentleman of large business connections and enviable standing. He is cashier of the Canton National Bank, and is officially connected as well with the Chesapeake Electric and Water Company, one of the most far-reaching and important of Baltimore's many institutions.

ch, Isaac

d. 11/8/1973

ex. 63

Benesch, ex-store executive, is dead



ISAAC BENESCH

Isaac Benesch, a retired department store executive and a former stage set designer, died yesterday at his home at 1425 Park avenue after a long illness.

Mr. Benesch, who was 63, retired two years ago from Hutzlers, where he had been home furnishings coordinator since 1961.

117 plays

He started with the department store after being associated with Comprecht and Benesch, a furniture company that had ben owned by his fam-

ily, for 20 years.

He earlier had been associated with the design of the sets or lighting for 117 Broadway plays.

A native of Baltimore, he was a graduate of the Park School and had studied at the Yale University drama school.

He then became associated with Donald Oenslager, a noted stage designer, and taught stage design in New York.

At the beginning of World War II, he returned to Baltimore and designed camouflage for the Martin plant in Middle

River as well as becoming associated with the family firm.

He had worked as a consultant to local theater groups and was a member of the Yale Club.

He is survived by his wife, the former Jane Van Praag; two daughters, Katherine Benesch, of New Haven, Conn. and Barbara Benesch, of San Juan, Puerto Rico; two brothers, Edward Benesch, of New York, and Jesse Benesch, of Baltimore, and a sister, Mrs. Julius Bloom, of Seekouk, Mass.

Services will be private.

Balto. Sun. 11/19/1973



JESSE BENESCH
Dies at 72.

Jesse Benesch, who founded one of Baltimore's oldest furniture stores and made it nationally famous for its presentation of advanced contemporary designs, died yesterday at Union Memorial Hospital. He had suffered from a heart condition for several months.

The son of Isaac and Fanny Benesch, Jesse Benesch was born in Baltimore 72 years ago and educated in local schools. As a young man he worked in his father's furniture store, on Gay street, which was founded in the middle of the Nineteenth Century. **Sun**

First Delivery Truck

In 1901, in partnership with the late Jacob Gomprecht, he opened the Eutaw street furniture store which now bears their names.

One of the firm's firsts, was the purchase, in 1912, of the city's first retail store delivery truck.

Modern furniture was first displayed in the store in 1927. Its "Floor for Moderns" is now celebrated in the furniture business and in progressive art museums from coast to coast.

Mr. Benesch was an active Mason most of his adult life, attaining the thirty-three Masonic degree—the highest in the order—in 1925.

Sun, 9-3-1952

The many titles he held at various times included president of Mount Pleasant Sanitarium, of which he was elected an honorary director in 1947, member of the board of trustees of the Baltimore Hebrew Congregation, treasurer of Associated Jewish Charities, and Almoner of the Ancient and Accepted Scottish Rite.

Other Positions

He was also Worshipful Junior Grand Steward of the Grand Lodge of Maryland, Worshipful Master of the Amicable Lodge, member of the Masonic Veterans Association, president of the Retail Furniture Association of Baltimore, president of the National Retail Furniture Association, Chairman of the board of the national association, and, from 1936 until the time of his death, a member of the board. **Sun**

In 1936, Mayor Jackson presented the Cavalier Trophy to Mr. Benesch—the highest honor to be won in the furniture trade.

The award was made as a result of a national election in which votes were cast by 9,000 furniture dealers.

The Retail Furniture Association of Baltimore in 1940 awarded Mr. Benesch a testimonial of appreciation for his services to the association. **SEP 3 1952**

Mr. Benesch in 1950 was the first person to receive the annual award of the Maryland Furniture and Carpet Association for "the member contributing most to the industry. He was then 70 years old.

Interested In Sports

An enthusiastic golfer and fisherman until a few years ago, Mr. Benesch continued to enjoy sports vicariously until his final illness. He was especially interested in baseball and football.

He was an early member of the Suburban Club and a one-time member of the Phoenix Club, but belonged to neither in recent years.

He is survived by his wife, Florence Morris Benesch; three sons, Isaac, Edward M., and Jesse, Jr., all of Baltimore; a daughter, Mrs. Julius Bloom, of Providence, R.I.; two sisters, Mrs. Jacob Gomprecht, his partner's widow, and Mrs. Rubin Ottenheimer, both of Baltimore and eight grandchildren.

Funeral services will be held at a funeral establishment at North and Pennsylvania avenues. Burial will be in Baltimore Hebrew Congregation Cemetery.

un, 9-3-1952

Benesch, Jesse

-1952

JESSE BENESCH, of the firm of Gomprecht and Benesch, was notified on July 18 that he had been awarded a five-foot silver trophy for "distinguished service to the furniture industry." The award was made by a vote of some 7,000 furniture dealers at the "Furniture Market," held at Chicago. The trophy will be presented during "Furniture Week" in October, though the place of presentation has not been announced. The trophy was placed on display in New York City during the week of July 20.

BALTIMORE-8-1936

Benesch, Jesse

Jesse Benesch Sr., was awarded a testimonial "in recognition of fourteen years of outstanding work for the retail furniture trade" at a meeting last night of the Retail Furniture Association of Baltimore in the Stafford Hotel. The presentation was made by R. H. Levinson, past president of the association.

EVE.SUN - 3-15-1940

Bender Bros (Geo and Chas Bender),
 bksmiths, 927 Pear
 Bender Chas (Bender Bros), 581 Union
 Bender Chas, wagoumkr, 1054 Pa av
 Bender Chas A, lab, 430 s Stricker
 Bender Chas F, clk, 710 w North av
 Bender Charlotte R Mrs, 1743 e North av
 Bender Christina Mrs, 121 Parkin
 Bender Christpr, painter, 350 n Calvert
 Bender Edwd, lab, 2001 Winans row
 *Bender Edwd F, barber, 302 n Pine
 Bender Ellzab, 1044 Pa av
 Bender Florence S Mrs, 1012 e North av
 Bender Fredericka Mrs, 624 s Durham
 Bender Gabriel, saloon, 812 w Pratt
 Bender Geo (Bender Bros), 565 w Biddle
 Bender Geo F, condr, 624 s Durham
 Bender Geo, lab, 1533 Beason
 Bender Geo, printer, 10 w Henrietta
 Bender Geo C, janitor, 565 w Biddle
 Bender Geo P, dairy, 907 Druid Hill av
 Bender Harry C, butcher, Violetville
 Bender Henry, lab, 1403 Decatur
 Bender Henry, moldmkr, Westport
 Bender Henry, porter, 337 s Payson
 Bender Henry, printer, 10 w Henrietta
 Bender Henry, tailor, 1214 Hull
 Bender Jacob, painter, 581 Union
 Bender Jas, tailor, 420 n Collington av
 Bender John, tailor, 414 n Washington
 Bender John C, clk, 1055 w Lexington
 Bender John F, mach, 219 Gorsuch av
 Bender Jos, harnessmkr, 4 e Henrietta
 Bender Jos, saloon, 2311 Jefferson
 Bender Jos, tailor, 1828 n Collington av
 Bender Jos J, salesman, 817 Woodward
 Bender Louis, pkr, 624 s Durham
 Bender Louis, sawyer, 1024 Granby
 Bender Rosa A, grocer, 581 Union
 Bender Thos, hairwkr, 215 Bentalou
 Bender Vance W, clk, 1416 e Chase
 Bender Wm F, brakeman, 430 s Stricker
 Bender Wm H, foreman, 1416 e Chase
 Bender Wm O, framemkr, 1237 McElderry
 Bender Writter Jos, salesman, 1046 w Lexing-
 ton
 Benderth Annie Mrs, 1112 Burgundy al
 Bendwald Henry, 413 Stockholm
 Bender Adam, brewer, 1615 Milton av
 Bender Wilhelmina Mrs, 335 n Gay
 Bender Wm H, mus insts, 335 n Gay
 Bendon Mary E Mrs, 2036 e Fayette
 Bendou R Jackson, clk, 1647 w Lanvale
 Bendon Wm, driver, 2036 e Fayette
 Bendon Wm T, lab, 2036 e Fayette
 Bendt Aug, saloon, 801 e Fort av
 Bendt John F C, clk, 801 e Fort av
 Bendt Robt, plumber, 801 e Fort av
 Benedict Abraham (Benedict Bros), The
 Stafford
 Benedict Benj (Benedict Bros), 2422 Eutaw
 pl
**BENEDICT BROS (Abraham and Ben-
 jamin Benedict), Manufacturers Shirts
 and Overalls, 106-108-109-111 Hopkins
 Place**
 Benedict Jos, 515 n Eden
 Benedict Convent, Mount c Lombard
BENEFICIAL ASSOCIATION OF THE
 Maryland Line, 18 w Saratoga
 Benesch Aaron (Isaac Benesch & Sons), 612
 n Bdway
 Benesch Abraham, furn, 407 s Bdway, h
 400 do
 Benesch Albert, clk, 561 1/2 n Gay
 Benesch Arthur, bkpr, 518 n Bdway
 Benesch Chas, tailor, 1720 Barnes
 Benesch Emilie Mrs, 1141 McElderry
 Benesch Ezra, tailor, 653 w Lexington
 Benesch Frances, prov, 124 s Wolfe
 Benesch Furniture Co, 561 n Gay
 Benesch Ignatius, butcher, 1001 n Gay, h
 1703 e Eager
 Benesch Isaac (Isaac Benesch & Sons), 518
 n Bdway
**BENESCH ISAAC & SONS (Isaac,
 Aaron, William M and Samuel Benesch),
 Furniture, Carpets, Planos, Clothing, &c,
 500 to 557 n Gay**

Benesch Jacob, clk, 124 s Wolfe
 Benesch Jacob, tailor, 906 Granby
 Benesch Jas J, foreman, 229 s Chester
 Benesch Jesse, clk, 518 n Bdway
 Benesch Jos, clk, 561 1/2 n Gay
 Benesch Jos, lab, 2003 Bohemia ct
 Benesch Jos, lab, 1447 Andre
 Benesch Jos jr, lab, 1447 Andre
 Benesch Jos F, shoemkr, 229 n Duncan al
 Benesch Louis, lawyer, 6 e Lexington, h
 561 1/2 n Gay
 Benesch Mary Mrs, 2003 Bohemia ct
 Benesch Moritz, clk, 1703 e Eager
 Benesch Morris, clk, 906 Granby
 Benesch Saml (Isaac Benesch & Sons), 518
 n Bdway
 Benesch Sarah Mrs, 852 s Eutaw
 Benesch Wm M (Isaac Benesch & Sons),
 614 n Bdway
 Benesch Frank, bkbinde, 1734 Ashland av
 Benevolent and Protective Order of Elks,
 307 w Fayette
 Beneze Chas L, lab, 66 Caton av
 Beneze Chas L, mach, 4 Fait av
 Beneze Ellzab Mrs, 145 Stockholm
 Beneze Geo N, lab, 66 Caton av
 Beneze Henry, mach, 66 Caton av
 Beneze John, lab, 66 Caton av
 Beneze Julius, watchmkr, 1736 Bank
 Benfer David F, baggage master, 1508 Hol-
 brook
 Bengel Christian J, insp, 415 s Wolfe
 Bengel Conrad, baker, 1638 w Lanvale
 Bengel Fredk F, mach, Heathbrook Park
 Bengel Henry, oiler, 415 s Wolfe
 Bengel Jacob F, fireman, 415 s Wolfe
 Benham De Witt M Rev, Hotel Altamont
 Benhoff Adam, eng, 1101 East av
 Benhoff Arthur H (Arthur H Benhoff &
 Co), 224 n 1st e
 Benhoff Arthur H & Co (Arthur H Ben-
 hoff, Wesley F Day), dry gds com, 10 Hop-
 kins pl
 Benhoff Fredk, 234 s Clinton
 Benhoff Geo F, mach, 224 n 1st e
 Benhoff Henry J, fireman, 234 s Clinton
 Benhoff Howard C, lab, 20 Hudson ext
 Benhoff Oliver C, boxmkr, 2214 e Fayette
 Benhoff Oscar, bksmith, 5th av ext
 Benhoff Wm, eng, 20 Hudson ext
 Benick Andw L, bkpr, 606 n Collington av
 Benick Jas V, clk, 440 n Patterson-pk av
 Benick Jos J, musician, 424 n Castle
 Benick Louis, shoemkr, 440 n Patterson-pk
 av
 Benisch Edmd F, poultry, 885 w Fayette
 Benisch Gustav W, saloon, 1591 n Fulton av
 Benisch Wilhelmina Mrs, 802 w Balto
 Benjamin A J, div frt and pass agt B C &
 A Ry, 241 South, h Salsbury Md
 Benjamin Abraham E, decorator, 1202 w
 North av
 Benjamin Benj, ctr, 1225 Jackson e
 Benjamin Bldg, 420 to 424 e Fayette
 Benjamin C A & Co (Chas A and Jos E
 Benjamin), coal, 333 n Fremont av and
 402 s Carey
 Benjamin Chas A (C A Benjamin & Co), h
 Leslie, Md
 Benjamin Chas L, carp, 10 Brick Hill
 Benjamin Frank T, music teacher, 111 w
 Franklin
 Benjamin Geo A, molder, 227 n Wolfe
 Benjamin Henry L, salesman, 1202 w North
 av
 Benjamin Israel, tailor, 236 n Caroline
 Benjamin Jas M, carp, 10 Brick Hill
 Benjamin John M, packer, 10 Brick Hill
 Benjamin John W, barber, 2740 Hunting-
 don av
 Benjamin Jos, bkpr, 1709 e Balto
 Benjamin Jos C H, clk, 3031 Northwest
 Benjamin Jos E (C A Benjamin & Co), 730
 Dolphin
 Benjamin Juliet Mrs, 1202 w North av
 Benjamin Martin O, clk, 1927 Guilford av
 Benjamin Mary (Jos Scherer & Co), 1709 e
 Balto

G. & P. Phones 2199-1813.

STONE AND SAND
DANIEL A. LEONARD.

Capacity 800 Tons Daily.
 Best Quality for All Purposes.
 Crushed Stone a Specialty.
 Best Railroad Facilities.
 Maryland Phone 410.

Office—42 Bldr's Ex. Bldg.
 Quarries—Gwynn's Falls,
 Wilkens Av. and Walbrook

Baltimore Transfer Co. } Tally Hos, Busses and Phaetons,
 111 East Baltimore Street. } For Pic-Nics and Parties of all Kinds.

ST. STANISLAUS' (R. C.) CEMETERY

(See Advt. in Cemeteries)

MT. CARMEL ROAD

1910

BEN

DIRECTORY 1910

BEN

309

Ben Louis, ironer, 405 s Bond
 Bena Aug J, polisher, h 1313 n Port
 Bena Emil J, glass beveler, h 1512 n Port
 Bena Eug, polisher, h 1502 n Port
 Bena Eug A, glasswkr, h 1518 n Madeira
 Benardo Desando, lab, 4330 Eastern av
 Bencepwz Valergan, lab, 1337 Reynolds
 Benchoff Alice N, h 1214 w Mulberry
 Benchoff Arthur, brakeman, 1412 n Fulton av
 Benda Anton J, tailor, h 109 n Port
 Benda Frank J, tailor, h 2103 e Eager
 Benda Jas F, lab, h 708 n Madeira
 Benda Jas F, tailor, 416 n Bradford
 Benda Jas V, baker, 211 n Madeira
 Benda John, musician, h 929 McDonogh
 Benda John, tailor, 2318 Eager pl
 Benda John J, molder, h 2426 e Monument
 Benda Jos, lab, h 714 n Bradford
 Benda Jos, lab, h 720 n Duncan
 Benda Jos A, tailor, 925 n Wolfe
 Benda Jos C, tailor, h 706 n Bradford
 Benda Jos J, reedwkr, 708 n Madeira
 Benda Thos, tailor, h 19 n Durham
 Benda Wenzel, tailor, 119 n Montford av
 Bendall Wm N, tailor, h 1822 n Mount
 Bendann Clarence, salesman, 1813 Madison av
 Bendann Danl, fotogr, h 1813 Madison av
BENDANN DAVID (David, Laurence and Maurice Bendann), Fine Arts and Frame Manufacturers, 105 e Balto, C & P Tel St Paul 185
 Bendann David (David Bendann), h 2406 Eutaw pl
 Bendann Felix, cashr, 2406 Eutaw pl
 Benda Laurence (David Bendann), 2406 Eutaw pl
 Bendann Maurice (David Bendann), 2406 Eutaw pl
 Bendann Roland, bkpr, 2406 Eutaw pl
 Bender Abraham, tailor, 115 s Exeter
 Bender Annie F Mrs, 1431 e Monument
 Bender Anton, tailor, 109 n Port
 Bender Arthur L, bkpr, h 624 w Franklin
 Bender Aug, lab, 9 e Ostend
 Bender Aug, lab, 1426 Towson
 Bender Aug, lab, h 924 s 3d e
 Bender Aug, solr, h 2036 w Lanvale
 Bender Cath S Mrs, 420 n Collington av
 Bender Chas, driver, 1100 Pa av
 Bender Chas, driver, h 117 n Potomac
 Bender Chas, tailor, 500 n Collington av, h 420 do
 Bender Chas J, piano tuner, 1909 e North av
 Bender Charlotte R Mrs, 1765 e North av
 Bender Edith B, tchr, 1626 n Caroline
 Bender Elizab Mrs, 1100 Pa av
 Bender Emnl, tailor, h 1633 e Fayette
 Bender Florence S, h 1626 n Caroline
 Bender Frank, h 816 Shuter
 Bender Frank, molder, h 1714 Hanover
 Bender Geo, bksmith, h 565 w Biddle
 Bender Geo, clk, 2714 Wilkens av
 Bender Geo E, bkpr, h 1717 Windsor Mill rd
 Bender Geo F, saloon, 1821 Bank, h do
 Bender Geo P, confr, 951 Pa av, h do
 Bender Grover C, carp, 565 w Biddle
 Bender Harry, huckster, h 137 Millington
 Bender Harry C, butcher, h 2714 Wilkens
 Bender Harry L, clk, 1626 n Caroline
 Bender Henry, lab, h 1426 Towson
 Bender Henry J, printer, h 9 e Ostend
 Bender Jacob, driver, h 1909 e North av
 Bender Jas, tailor, h 131 n Grove
 Bender Jas, tailor, 816 Shuter
 Bender John, plumber, 2714 Wilkens av
 Bender John, tailor, h 414 n Washington
 Bender John H, printer, h 9 e Ostend
 Bender John J, pressman, 814 n Durham
 Bender Jos, 4 e Henrietta

Bender Jos, tailor, h 1801 n Duncan al
 Bender Jos J, bksmith, 727 w Franklin
 Bender Louis J, salesman, 2202 e Balto
 Bender Margt A, 413 s Caroline
 Bender Paul, carp, 1426 Towson
 Bender Wm F, lab, h 430 s Stricker
 Bender Wm H, Garrison av nr Liberty Heights av
 Benderly Samson, physician, 125 Aisquith, h 1522 e Biddle
 Bendewald Dorothy, tchr, 12 n Monroe
 Bendler Jas M, eating h, 2230 Boston
 Bendler Wilhelmina Mrs, h 713 Forrest
 Bendler Wm H, mus insts, 432 n Gay
 Bendon Wm T, lab, h 1223 n Bradford
 Bendt Chas E, carp, h 1733 Jackson
 Bendt Emily, confr, 742 e Fort av
 Bendt Henry W, dairy, 742 e Fort av
 Bendt John F C, paints, 1130 Harford av
 Benedict Benj, mfrs agt, 207 w Lombard, h 2409 Madison av
 Benedict Bertram, student, 2409 Madison av
 Benedict John, carp, h 948 n Chapel
 Benedict Lydia Mrs, 2404 n Charles
 Benedict Jos, timekpr, 516 n Bdway
 Beneficial Assn of Md Line, C S A (See Appendix)
 Benes Frank, tailor, 200 n Rose
BENESCH AARON (Isaac Benesch & Sons), and Vice-President Old Town National Bank, h 2358 Eutaw pl
 Benesch Abram, h 1701 Linden av
 Benesch Albert, carpets, 535 n Gay, h do
 Benesch Arthur, clk, 2438 Eutaw pl
 Benesch Arthur J, clk, 233 n Fremont av
 Benesch Bertha, cashr, 1720 Barnes
 Benesch Chas, tailor, h 1720 Barnes
 Benesch Edwd, clk, 206 n Montford av
 Benesch Fannie Mrs, h 2438 Eutaw pl
 Benesch Ignatius, motorman, h 2923 Bernard
 Benesch Ignatz, butcher, 1001 n Bond
BENESCH ISAAC & SONS (Aaron, William M and Samuel Benesch), Furniture, Carpets, Pianos, Clothing, etc, 549 to 557 and 569 to 571 n Gay, Both Phones
 Benesch Israel, tailor, 653 w Lexington
 Benesch Jacob, grocer, 200 n Montford av
 Benesch Jacob, tailor, 1235 McElderry
 Benesch Jesse (Gomprecht & Benesch), h 2533 Madison av
 Benesch Jos, lab, 818 n Madeira
 Benesch Jos, o e a, 1462 Andre, h 1447 do
 Benesch Jos, furn, etc, 561 1/2 n Gay
 Benesch Jos, shoemkr, Raspeburg
 Benesch Jos Jr, expressman, h 1447 Andre
 Benesch Louis, lawyer, 415 Garther Estate bldg, h 1045 w North av
 Benesch Michl, tailor, 1518 Eastern av
 Benesch Moritz, furn, 827 n Gay, h do
 Benesch Morris A, grocer, 217 n Arlington av, h do
 Benesch Myer, tailor, 2121 Christian
 Benesch Rudolph, prov, 1921 Fairmont av
 Benesch Saml (Isaac Benesch & Sons), h 2416 Eutaw pl
 Benesch Wm M (Isaac Benesch Sons), h 2430 Eutaw pl
 Benesuzinnas Stanislaus, lab, 640 Dover
BENEVOLENT AND PROTECTIVE Order of Elks, 307 w Fayette, C & P Tel St Paul 5172 (See also Appendix)
 Beneze Annie M Mrs, h 124 Stafford
 Beneze Chas L, eng, h 3500 Gough
 Beneze Eug, lab, 1428 Bank
 Beneze Geo N, lab, h 126 Stafford
 Beneze Henry H, mach, h 13 McCurley
 Beneze Julius, jeweler, 1428 Bank
 Beneze Louis, mach, h 124 Stafford
 Beneze Wm, electrn, h 223 Collins av
 Benfer Benj D, clk, h 2231 e Preston
 Benfer David F, condtr, h 1508 Holbrook
 Bengel Chas, clk, 226 s Chester
 Bengel Chas J, mach, h 2131 Woodberry

QUICK LINOTYPE COMPOSITION See the Baltimore City Printing and Binding Co.

Name and Address of every Real Estate Dealer IN THE UNITED STATES IS GIVEN IN
DI'S REAL ESTATE DIRECTORY,
 Abstracts of Title, Digest of Realty Laws, Etc. R. L. POLK & CO., Detroit, Mich.

Office Phone:
ST. PAUL, 6100
Night Phone:
Homewood 1424

**Curtis Bay
TOWING
Company**
Baltimore
**Powerful
Tug
Boats**

See Advt in
Steamship
Department

Edward T. Reisler
415 American Building
Telephone St. Paul 3899

Insurance

CALVERT BANK

HOWARD & SARATOGA STREETS

BENDER

" Jas J tailor 411 n Madeira
" John baker h 608 n Glover
" John photogr 826 w Fayette
" John E teleph opr h 11 Wilhelm av Wilhelm Park
" John L electr h 2 s Robinson
" Jos tailor h 810 Woodward
" Jos C brushmkr h 925 n Wolfe
" Jos J meeh h 127 n Streep
" Lawrence leb h 1420 Richardson
" Louis paperhng h 2124 e Lombard
" Louis J buyer h 652 e 35th n
" Malda L confr Hollins Ferry rd nr Bank av Lakeland
" Mary R (wid Antone J) 111 n Montford av
" Norbert J shipftr 111 n Montford av
" Paul woodwkr Hollins Ferry rd nr Bank av Lakeland
" Reuben drygds 235 n Gilmore h do
" Rose mach opr 831 n Caroline
" Saml tailor h 2501 Druid Hill av
" Sidney jockey h 2121 Oak
" W D clk Y M C A
" Wm ironwkr 2 s Robinson
" Wm E hostler 420 s Stricker
" Wm F condr h 420 s Stricker
Benderman Agnes matron 505 w Preston
" Annie Mrs 827 n Carrollton av
" Frank mach 2039 Fleet
" Harry S carp h 2039 Fleet
" Henry S mach 2039 Fleet
Benderitter Jas A packer 210 s Gilmore
" Jos A lab h 210 s Gilmore
Bendewald Dora tchr 12 n Monroe
Benditz Alex painter h 1513 e Pratt
Bendix Mary (wid Jas) 1540 Latrobe-pl ter
Bendler Jas M lunchroom 607 e Lombard h do
Bendroff Saml mattressmkr h 1208 e Balto
Bendt John F C hardware 125 s Gilmore h do
" Louisa Mrs 1810 e 28th n
Bendetta Pasquale lab h 1017 Alsquith
" Severno cook 14 n Curley
Benedict Albert J mach 414 s Smallwood
" Anna L (wid Thos J) h 1702 e Monument
" Aug carp 549 s Bentalou
" Benj drygds com 103 Emerson Tower bldg 2207 Eutaw pl
" Bertram 2207 Eutaw pl
" Chas lab 519 s Bentalou
" Elmer H office mngr h 705 Beaumont av
" Ethel M tchr J H U 1702 e Monument
" Frank J lab h 714 n Port
" Howard S student 2207 Eutaw pl
" John lab h 948 n Chapel
" Jos tailor 833 Hollins
" Lida B (wid Louis E) 3713 Springdale av
" Louis E pilot 3713 Springdale av
" Moses lab 151 n High
" Orville W inspr h 2443 Edmondson av
" T Harold student 1702 e Monument

BENEFICIAL LOAN SOCIETY, R T
Walter Manager, 9 and 10 Park
Bank Bldg, Phone St Paul 2696
" Society of Homestead 1620 Gorsuch av

BENESCH AARON, President Isaac
Benesch & Sons, and Vice-President
Old Town National Bank, h 2813 n
Calvert

" Abr h The Nelmar
" Albert genl mdse 561 1/2-563 n Gay h do
" Amelia (wid Myer) 831 Hollins
" Andw carp h 3217 Elliott
" Anthano cabtmkr 3036 Boston
" Arthur supt h The Esplanade apts
" Benj buyer 2031 e Balto
" Bertha butter h 2323 e Monument
" Charles butcher h 1722 e Eager
" Chas M lab h 1460 Andre
" Eli butcher 1722 e Eager
" Elias slsmn 107 n Fremont av
" Frank J tailor h 708 n Belnord av
" Harry foreman h 14 n Collington av
" Ignatius M police h 823 n Luzerne
" Ignatz meats 1001 n Bond h do
" Isaac drygds 651 w Lexington h do
" Isaac furn h Seven Mile la nr Pk Hts av

BENESCH ISAAC & SONS, Aaron
Benesch President, William M
Benesch Vice-President, Samuel
Hamburger Secretary, Jerome Benesch
Treasurer, Furniture and
Clothing, 549-557 and 567-571 n
Gay, Private Branch Exchange
Wolfe 2287

In the Shopping District
SPECIAL DEPARTMENT FOR
LADIES' EXCLUSIVE USE.
SEE ADVT. IN BANK DEPT.

BENESCH

" Isidore butcher 1722 e Eager
" Jacob clothing mnfr h 539 n Central av
" Jennie Mrs 2031 e Balto
" Jerome treas Isaac Benesch & Sons 2430
Eutaw pl
" Jesse (Gomprecht & Benesch) h Seven Mile
la
" Jos shoemkr n Belair rd nr Bellevue av
" Jos watchman 914 n Luzerne av
" Jos jr driver h 1447 Andre
" Louis lawyer 1645 w North av h do
" Mary grocer 1733 Orleans h do
" Moritz furn 827 n Gay h do
" Morris A meats 1240 Scott h do
" Wm M v-pres Isaac Benesch & Sons h
2430 Eutaw pl
Benesusas Anthony tailor 34 s Fremont av
" Bernard tailor 34 s Fremont av
" Jos W clk 34 s Fremont av
" Stanley lab h 34 s Fremont av
" Stanley jr tailor 34 s Fremont av
**BENEVOLENT AND PROTECTIVE
ORDER OF ELKS, Baltimore Lodge
No 7, Charles R Klosterman Secretary,
307 w Fayette, Phones St
Paul 4587-4588**
Benese Chas L eng h 3500 Gough
" Geo N lab h 3153 Stafford
" Henry H foreman h 263 McCurley
" Wm electr h 519 Oakland av
Benfer Dorothy L tchr 848 Edmondson av
" Edwin H clk 907 n Arlington av
" Roy signalman h 1508 Holbrook
" Wilbur E clk 1508 Holbrook
Bengel Bernard confr 2593 w Balto
" Chas clk 2731 Tivoly av
" Chas J foreman h 1001 Roland Hts av
" Fredk F meeh eng h 4008 Fernhill av
" John chauffeur 2593 w Balto
" John foreman 1769 Montpelier
" Leonard F slsmn h 1417 n Patterson pk av
Benges John lab 719 w Cross
Bengies Andw plstr h Trappe rd nr Monumental
rd
Benglesdorf Andw lab 205 s 5th e
" Chas F motorman h 1707 s Charles
" Wm lab h 205 s 5th e
Benham DeWitt M Rev h The Cecil
" Harry contr 5212 St George av
" Helen W 1801 Linden av
" Leslie F mach h 1732 St Paul
" Thos W com trav 1801 Linden av
Benhoff Arthur H mtrs agt 400 Rollins bldg
h 2714 Elising av
" Edith M clk 3006 Arunah av
" Edwin M clk 116 Callender
" Geo clk h 3038 Dillon
" Henry pipeftr h 235 s East av
" Howard mach h 3129 Eastern av
" John H eng h 1103 s Ellwood av
" Oliver C eng h 135 s East av
Benick Jos J musician h 3114 McElderry
" Louis shoemkr 438 n Patterson-pk av
" Mary E (wid Andw L) confr 2104 e Madison
Benintende Gaetano 1011 Stirling
" Jos tailor 1011 Stirling
Benisch Amelia (wid Edwd) 5338 Park Hts av
" Augusta (wid Gustav) h 2804 Edmondson av
" E F & Co (Edmund F Benisch) poultry 415
w Franklin
" Edmund F (E F Benisch & Co) h 5338 Park
Hts av
" Paul J ironwkr 2804 Edmondson av
" Frank clk 831 Hollins
Benitez Denise clk 340 n Charles
Benito Anton fruit h 404 n Exeter
Benizio Frank boxmkr 272 n Exeter
Benja John lab h 8127 Elliott
Benjamin Aaron carp h 1420 e Eager
" Ada M stenogr 2210 Elsinor av
" Alice F clk 1927 Guilford av
" Amanda Mrs h 2328 Pa av
" Anna mus tchr 1927 Guilford av
" Barnett grocer 1414 e Lexington h do
" Benj foreman h 801 n Bdway
" Chas patternmkr h 3643 Maple av No 1
" Chas C slsmn h 2200 Callow
" Curtis millhd h 702 Puritan
" Edythe clk 2200 Callow av
" Everett pressman 612 Ellwood av
" Fannie 2d hd clothing 1514 e Lombard h do
" Geo M molder h 2817 Huntingdon av
" Geo S mov pictures h 2317 Eastern av
" Harold J real est 2115 Linden av
" Harry E ladies wear h 2410 Liberty Hts av



UTILITY MFG. CO.

1816-1824 LANCASTER ST.

Tin and Wire Kitchen Specialties



CALVERT BANK

HOWARD & SARATOGA STREETS

We Welcome Small Deposits

Interest paid in Savings Department twice a year

SEE ADVT., IN BANK DEPT.

CUMBERLAND COAL CO.

Coke Colex Coal

(Compressed Anthracite Coal)

Phones: Calvert 5300-1

Continental Building



Where To Buy?

Consult the Classified Business Lists in This Directory

BENDER

- Hester mlnr r117 n Charles
- Hilda L Mrs typist r900 n Montford av
- Jacob (Rosa) chauff h1909 e North av
- Jacob (Katrina) lab h3907 Orleans
- Jacob (Rose) tailor h710 Aisquith
- Jas (Sophia) tailor h809 n Chester
- John (Mary) lab h814 Shuter
- John L (Beatrice) electn h405 n Belnord av
- Jos meat ctr r5 n Catherine
- Jos tailor r420 w Lexington
- Jos A (Rose) hbr h919 n Rose
- Kath (wid Henry C) h2876 Harford av
- Lillian r1909 e North av
- Louis (Bessie) pntr h2210 e Balot
- Louis J (Elvina E) buyer h617 Melville av
- Marie W sten Lee E Hartman & Co r Perry Hall Md
- Marion (wid Chas) r34 n Ellwood av
- Minnie r727 n Milton av
- Naomi slsldy r2041 e Lombard
- Paul (Maida L) carp h5 Virginia av
- Paul (Maida) confr Hollins Ferry rd nr Bank av (Lkld) h do
- Paul C brklyr r3328 Beech av
- Paul E (Marie) tailor h2431 e Bliddle
- Reuben (Annie) men's furngs 716 Poplar Grove h do
- Richd (Alice) mach h3321 Elmley av
- Rose opr r710 Aisquith
- Russell R student r2628 n Calvert
- Sophia attndt r809 n Chester
- Theo silversmith h405 e 24th
- Vincent opr r718 w Fayette
- Wilbur (Hilda) clk h311 n Robinson
- Wm (Thelma) hostler h1943 Ramsay
- Wm (Thelma) lab h413 s Vincent
- Wm F (Florence) cond h420 s Stricker
- Wm H (Anna) cleaning and pressing 3 Commerce h2910

Bender's Lunch (Chas H Muller) lunch room 1705 n Charles

Bendermye rEdw L carp r703 Canton av

Bendetta Jos reprmn r207 s 6th

Bending AUG G carp r519 s Bentalou

Chas lab r519 s Bentalou

Bendix John H carp r1540 Latroce Pk ter

Bendler Jas M (Ida L) restr 607 e Lombard res Jessup Md

Benit J Luther student r2711 Belair rd

John F C (Gertrde) hbr 2711 Belair rd h do

Louisa (wid Aug) r3339 Belair rd

Benedetti C Oscar (Edna) v-pres h3706 Sequoia av

Jos lab h207 s 6th e

Rosemond E student r3706 Sequoia av

Benedetto Tony (Beatrice) cond h2713 Boone

Benedict Agnes Mrs brushmkr r727 w Lexington

hB1 New Sheffield apts

Benj (Saddle) whol dry gds 301 Emerson Tower bldg

Frank (Mabel) lab h1709 Jackson

G Greenville tchr r Gilman Country Sch

John (Eliz) carp h912 n Madeira

John jr slsmn r912 n Madeira

Jos comp The Sun r912 n Madeira

Josephine dom r17 Somerset rd

Moses wtchmn h9 n Exeter

Nathan lab h1806 McCulloh

Oreille W (Carmelite) inspr h2443 Edmondson av

BENEFICIAL OAK SOCIETY, George W Holden

Mgr. 305 and 306 Park Bank Bldg, Phone Plaza 2696

Beneisch Edw poultry 722 Lexington Mkt h5338 Park Hts av

Benes Bernice G (wid Frank) elev opr r2612 Huntingdon av

Frank J (Anna; Rosewood Tailoring Co) r708 n Belnord av

Jas J tailor r2513 Ashland av

John sheenkr 2957 Clifton av h941 w Fayette

Benesch A Sam (Rosa) hB1 Nel Mar apts

Albert (Billie) real est 2435 Lakeriew av h do

Albert slsmn r1814 e Fayette

Anthony piano mkr h3217 Elliott

Antonia (wid Jos) r914 n Luzerne av

Arth furn r Esplanade apts

Aug (August) r633 Wash Blvd

Benj (Edith) res 431 n Eutaw h2419 Calloway

Cath (wid Jos) r791 w Montford av

Elh h2209 Mondawmin av

Elh (Anna) res 275 Belair Mkt r2209 Mondawmin

Emil chauff h221 n Bond

Fannie (wid Chas) r1749 e Preston

Harry (Leah) asst supt h821 Whitelock

Herbert slsmn r2903 Norfolk av

Ignatius (Bertha) polce h120 w White av

Ignatz (Melvina) meats 1801 N Bond h do

Irving h2209 Mondawmin av

BENESCH ISAAC & SONS INC, Furniture 549-357 and Clothing 567-371 n Gay, Private Branch Exchange, Wm 2287, William M Benesch Pres, Jerome W Benesch V-Pres, Samuel Hamburger Sec, George Herbst Treas, Geo J Gebhart Asst Treas

Isabel (Saratoga) meats 229 and 232 Belair Mkt h 1201 n Bway

Jacob (Mary) lab h1814 e Fayette

Jacob (Mary) tailor h1213 n Caroline

Jennie Mrs r1732 Ruxton av

Jerome slsmn h2435 Lakeriew av

Jerome W (Blanche) v-pres Isaac Benesch & Sons

The h n w cor 40th and Canterbury rd

Jesse (Comprecht & Benesch) h Seven Mile la nr Park Hts av

Jos (wid Jos) h 211 e Milton av

BENESCH

- Jos jr (Josephine) lab h1646 e Fort av
- Jos E meat ctr Fox Meat Market Inc r704 n Milton
- Julia clk r821 Whitelock
- L Arth r611 Esplanade apts
- Lillian hbr r2903 Norfolk av
- Louis (Bertha M) lawyer h645 w North av h do
- Louise hAldr r1749 e Preston
- Martin (Nora) USA h415 n Bway
- Maurice (Rebecca) h2903 Norfolk av
- Phillip mach r701 n Montford av
- Rudolph (Bertha) pork products 338 Belair Mkt r 2322 e Monument
- Ruth slsldy r821 Whitelock
- Sami (Rose) dry gds h3925 Belle av
- BENESCH W M (Mamie), Pres Isaac Benesch & Sons Inc, h The Belvedere Hotel**
- Zilla M tchr r1645 w North av
- Benesch Israel (Ida) dept store 651 w Lexington h do
- Sami clk h917 w Mulberry
- Benesus Stanley (Eliz) ironwkr h34 s Fremont av
- Benet Carroll (Sophia) wrecker h1719 Cole
- Jos J lab r1719 Cole
- Benevolent & Protective Order of Elks Balto Lodge No 7 Chas R Klosterman sec 307-09 w Fayette
- Benevitz Thos mach hd r1205 Hull
- Beneze Chas clk r5006 Ivanhoe av
- Chas L (Susan) eng r3500 Gough
- Edna student r3153 Stafford
- Eug meter wkr r616 s East av
- Florence E typist r 3153 Stafford
- Geo L chr eng r3153 Stafford
- Geo N (Eliz) lab h3153 Stafford
- BENEZE HENRY H, Vice-Pres Murrill & Kelser Employees Company, h3211 Frederick av**
- Louis G (Autogenous Welding & Brazing Co) r 261 McCurley
- Ruth M clk r3147 Leeds
- Benfer Annie L (wid Henry A) h1706 Homestead
- Edwin H (Anna D) claim agt h2117 St Paul
- Kenneth L student r1706 Homestead
- Pauline K nurse r1706 Homestead
- Rudolph H (Dorothea) clk h758 Edgewood
- Benford Caroline confr 88 Mosher h do
- Bengel Anita J music tchr (piano) 4008 Fernhill av h do
- Augusta nurse 613 n Linwood av h do
- Chas J (Jessie M) formn h1001 Roland Hts av
- Christian car inspr P R R r Rosedale Md
- Christian L formn r1417 n Patterson Park av
- Conrad C carp r3916 Mt Pleasant av
- Florence Mrs mach opr r647 s Stripper
- Frank F (Jane) machl eng h4908 Fernhill av
- Harry N clk r117 Goodwood rd (Himlin)
- Leonard (Kath M) slsmn h1417 n Patterson Park
- Bengelsdorf Edna sten r112 3d av (Bilyn)
- John die str r1724 s Hanover
- Benger Adeline (wid Clement) h129 Birkhead
- Benges John H r610 e Pratt
- John H (Blanche) chauff h1148 Ward
- Bengles Park development Co A Lincoln Herford
- pres 232-34 Equitable bldg
- Bengle Geo glasswkr r925 n Gay
- Bengston Brenard E (Elnora E) mach h2222 Preston pl
- Benham DeWitt M Rev (Grace P) pastor Central Presbyterian Ch h1117 n Eutaw apt 1C
- Harry F gen mgr Chesapeake Construction Co r216 S Paul
- Julia h624 Jasper
- Benhoff Adam A (Helen) leadburner h3023 Greetmt av
- Arth E (Annie) clk h2816 Brighton
- Arth H slsmn r2290 Eutaw pl
- Bert L clk r3306 Powhattan av
- Daisy R sten r3306 Powhattan av
- Dorothy S clk r6215 York rd
- Edwin M clk r116 Callendar
- Geo H (Mary L) clk h6215 York rd
- Howard C (Lillian) mach h2407 Aisquith
- John H eng h235 s East av
- John H jr (Elia) lab r235 s East av
- Willette nurse 2618 Forest Park av h do
- Beni Henry S (Mary) USN r851 Hmltn ter
- Benia John (Mary) crane opr h3321 O'Donnell
- Beniak Anna (wid John) r1455 Stevenson
- Bencevitz Paul (Josephine) lab h1706 e Fort av
- Benick Carl R v-pres r3114 McElderry
- Jos J (Barbara) musician h3114 McElderry
- Louis W (Edith) mgr r1214 Sargeant
- Mabel E tchr r3114 McElderry
- Mary E gro r104 e Madison h do
- Robt opr r101 Woodlyn av
- Benik Annette forldy r13 Elm (CB)
- Jos (Blanche) lab h13 Elm (CB)
- Jos jr student r13 Elm (CB)
- Martha L sten r13 Elm (CB)
- Benesch Amelia M (wid Edmond F) r5338 Pk Hts av
- Augusta (wid Gustav) h2804 Edmondson av
- E F & Co Edmond F Benesch mgr poultry 415 w Franklin apt 722 Lexington Mkt
- Edmond F (Anna M) mgr E F Benesch & Co r 5338 Park Hts
- Emma presser r2804 Edmondson av
- Paul metalwkr r2804 Edmondson av
- Benst Stanley tailor Vincent Bazarkas rd Friedman
- Benjamin Aaron (Annie) carp h1329 e Eager
- Ada clk r104 Forest Park av
- Alice F hbr r1927 Gullford av
- Amanda D (wid Jethro E) h1744 Moreland av
- Annie Mrs h27 Hillen
- Benj formn h801 n Bway
- Benj C (Reba; Manhattan Pants Co) r2414 Liberty Hts av
- Benjamin slsmn H R r2802 Lydia Southwest

THE GREAT HOUSE OF ISAAC BENESCH & SONS,

The Result of 50 Years' Honest Effort

If it were only consideration for the money you saved on everything bought of us, it would pay handsomely to do your buying from this Great House, but buying merchandise from these wonderful Stores means much more than this to you, it means the enjoyment of a freedom and security unknown elsewhere in America. Your selection of merchandise is made easy because of gigantic and varied stocks. Your purchases are absolutely safe because complete satisfaction is guaranteed, and even the question of payment is left entirely to your own pleasure.



123-125 & 127 MAIN ST. ANNAPOLIS, MD.

509 & 571 N. GAY ST. BALTIMORE, MD.

649 TO 557 N. GAY ST. BALTIMORE, MD.

32-34 PUBLIC SQUARE, WILKES BARRE, PA.

Our 12 Immense Stores and 16 Tremendous Large Warehouses to Supply Our Customers.

Truly the Benesch organization is one of immense proportions. It takes seven great stores to supply our trade in Baltimore, three buildings in Annapolis, Md., and two large buildings are required to serve the people of Wilkesbarre, Pa. In all three cities the people have learned that the "Benesch-way" is the economical—the wise and the best way to buy whatever they need. It isn't a bit remarkable when you know what a power in mercantile circles the Benesch organization is.

ISAAC BENESCH & SONS

23-125-127 MAIN STREET

ANNAPOLIS, MD.

123-125-127 MAIN STREET

CHARLES WEISS.

In every community will be found one who by reason of their long and honorable careers have won the confidence of the people, and whose trade has become so firmly established that it stands like the rock of Gibraltar. This is the case of our fellow townsman, Mr. Charles Weiss, who conducts the "best liquor house" at No. 8 Market Square, where he has been located for seventeen years, and has gathered about him a host of friends, number-

For the past seven years Mr. Weiss has been ably assisted in business by Mr. H. Strauss, one of our most popular young men.

LOUIS BOESSEL & CO.
JEWELERS.

One of the leading jewelry houses in Annapolis is undoubtedly that conducted by Louis Boessel & Co., Cor. Main and Conduit streets. The showroom presents a fine spectacle. From

in this section. Watch repairing is another specialty, and those who require this kind of work will do well to call here before going elsewhere.

the standard proprietary preparations, and a splendid line of toilet articles, besides all of the innumerable articles always to be found in an



Keep the Microbes on the Run BY NEW SANITARY CUSPIDOR

Kept continually clean by Automatic Water Sprays

Just the thing for hotels, cafes, restaurants, clubs, hospitals, dentists, public libraries, railway depots, street corners, etc.

Highly Endorsed by Boards of Health

NEW JERSEY CENTRAL

Service between Wyoming Valley Points and Baltimore, Washington and the South

THE NATIONAL PROTECTIVE LEGION

8-4 Lowenstein Building OF WAVERLY, N. Y. O. R. ZONE, Dist. Mngn.

218

R. L. POLK & CO.'S

Gollus Bert B, carp, res 174 S Hancock
 Gollus Charles C, lab, h 174 S Hancock
 Gollus Erma W, bookbinder, res 172 S Hancock
 Gollus Florence J, clk, res 172 S Hancock
 Gollus Genevieve C, clk, res 172 S Hancock
 Gollus Le Roy, mach, res 174 S Hancock
 Gollus May E, res 172 S Hancock
 Gollus Wm, mach, h 172 S Hancock
 Goman Joseph, lab, h 61 W Chestnut
 Gomer Louis C, painter, h 50 Sambourne
 Good Andrew, lab, h 119 N Meade
 Good Emily L, student, res 55 Simpson
 Good Emily M, student, res 91 Lehigh
 Good J Willard, genl ins 2 Laning bldg, h 55 Simpson
 Good Peter, genl store 91 Lehigh, h same
 Good Walter S, musician, res 91 Lehigh
 Good Willard S, clk, res 55 Simpson
 Good Wm O, clk People's Bank of W-B, res Wyoming, Pa
 Goodale Bessie, teacher, res 126 Madison
 Goodale Florence, dressmkr 126 Madison, res same
 Goodale Irma, milliner, res 126 Madison
 Goodale Irving, salesman, h 126 Madison
 Goodale Scott, carp, res 126 Madison
 Goodall George E, lab, h 268 S State
 Goodfellow Harry, painter, h 88 E Jackson
 Goodman John A, blacksmith, h 131 Bowman
 Goodman Mary, clk, res 131 Bowman
 Goodman Minnie, dressmkr, res 131 Bowman
 Goodner W Frank (Wright & Goodner), res 51 S Main
 Goodrich Alda M, clk, res 178 S Hancock
 Goodrich Charles F, lab, h 133 Horton
 Goodrich Fannie, dressmkr 178 S Hancock, res same
 Goodrich Richard D, carp, h 178 S Hancock
 Goodstein Annie, res 32 N Hancock
 Goodstein Bernard, res 32 N Hancock
 Goodstein Fannie, res 32 N Hancock
 Goodstein H & Co (Hyman Goodstein), produce 87 E Northampton
 Goodstein Hyman (H Goodstein & Co), h 374 E Northampton
 Goodstein Israel, h rear 40 N Hancock

OWEN McGLYNN

28-29 Simon Long Bld'g.

ARCHITECT

BOTH PHONES

WILKES-BARRE DIRECTORY.

219

Goodwin G Raymond, sec Press Club of Wilkes-Barre
GOODWIN WILLARD H, lawyer 42-43 Welles bldg, h Kings-
 ton
 Gordon Henry A, lawyer 313-315 Coal Exchange bldg, h Dor-
 ranceton, Pa
 Gordon Julia, wid John, res 84 Park av
 Gordon Thomas, shoemkr 37 Pine, h 39 same
 Gorham Anna, dom 264 S Franklin
 Gorlien Annie, dom 15 N Hancock
 Gorman Frank D, lab, h 22 Hutson
 Gorman Geraldine, bkkpr, res 157 Park av
 Gorman John H, barber, h 157 Park av
 Gorman John P, clk, res 157 Park av
 Gorman Joseph, lab, h 404 Academy
 Gorman Michael J, brakeman, h 301 N Main
 Gorman Thomas, lab, h 362 N Washington
 Gormley Edward, h 194 E Market
GORNIK PUBLISHING CO (Paul J Schmidt), publishers The
 Gornik, 110 N Main
GORNIK THE, Polish newspaper, Lewis Chencinski editor, 110
 N Main
 Gorton Charles R, foreman, h 119 Grove
 Gorton Ethel B, res 119 Grove
 Gorton Ruth E, student, res 119 Grove
 Gosart Edward, bricklayer, res 424 Scott
 Gosart Indeman, lab, h 424 Scott
 Goslin George H, sales agt Hitchner Biscuit Co, h 40 W Market
 Goslin Willis, ins agt, h 33 Carey av
 Goss Edwin, h 527 N Main
 Goss Ella M, housekpr 124 Stanton
 Goss Henry, res 59 Blackman
 Goss Jenkin, grocer 59 Blackman, h same
 Goss Jennie, clk, res 59 Blackman
 Goss Robert C, brakeman, res 527 N Main
 Goss Thomas, alderman 9th ward 119 Lincoln, h 12 Park av
 Goss Wm D, carp, h 46 Hazle av
 Gossier Charles S, produce 425 N Main, h same
 Gotko Frank, lab, h 46 N Empire
 Gottemeier Frank J, salesman, h 120 Brown
 Gotthold George W, office 53 S Penna av, res same
 Gottschalk Jacob, lab, h 203 Lincoln
 Gottschalk Jacob, bookbinder, res 118 Loomis

BENESCH & SONS, HOUSE FURNISHERS
 32-34 PUBLIC SQUARE, BENNETT BUILDING.

Furniture, Carp
 Stoves, Draper
 Here is where your cr
 is as good as your cr



THIRD AND MARKET STREETS : PENNSYLVANIA

717-622-8880

May 18, 1989

John Resnik
10031 Banner Lava Cap
Nevada City, CA 95959

Dear Mr. Resnik,

The following years of Boyd's Directory of Pottsville were checked for information regarding Isaac Benesch and Sons furniture.

1899-1901	No listing.
1901-1903	No listing.
1905-1907	No listing.
1909-1911	Benesch & Sons, 122 S. Centre St.
1911-1913	Benesch & Sons, 122 S. Centre St.
1913-1915	Benesch & Sons, 122 S. Centre St.
1915-1917	Benesch & Sons, 324-326 S. Centre St.
1919-1921	Benesch & Sons, 324-326 S. Centre St.

The Library has directories from 1867 to the present time, but unfortunately we are not able to check any other directories as they are being examined and processed for possible conversion to microfilm format. These directories should be available by winter 1989.

For more information, you may wish to contact the Historical Society of Schuylkill County (14 N. Third Street, Pottsville, PA 17901) as they have a complete set of city directories.

I hope this information is of some help to you and your research.

Sincerely,

Jonelle P. Miller
Head Reference Librarian